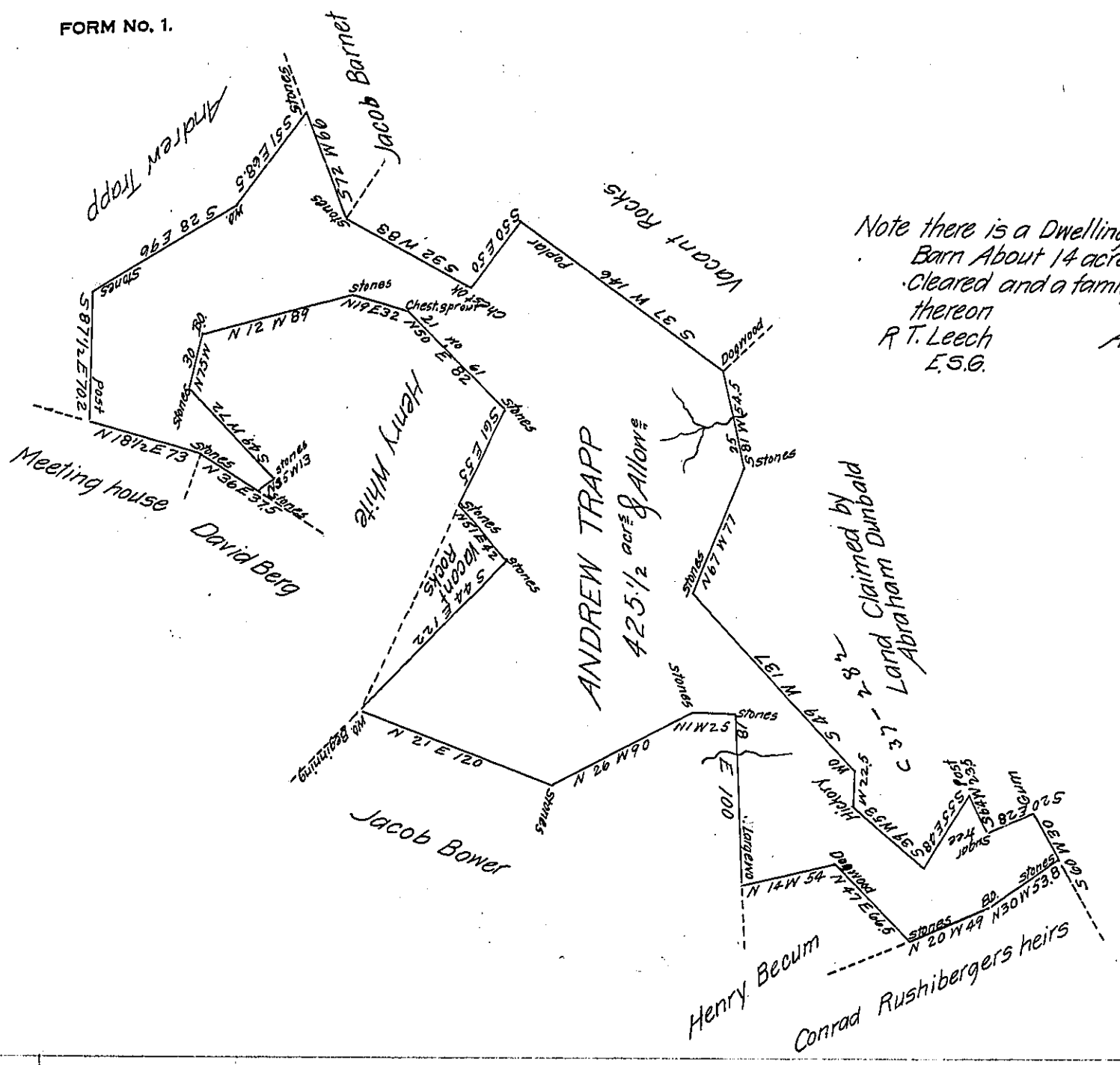


FORM NO. 1.



Note there is a Dwelling house and
Barn About 14 acres of land
cleared and a family Residing
thereon
R. T. Leech A. Mclean
E.S.G.

Situate on the Waters of Saltlick Creek Saltlick Township Fayette County and Surveyed the
22nd day of January 1817 In Pursuance of a Warrant dated the 30th day of December 1816.

Rich^d T. Leech Esquire
Surveyor General

P. Alexander McClean Deputy

IN TESTIMONY that the above is a copy of the original remaining on file in
the Department of Internal Affairs of Pennsylvania, made
comformably to an Act of Assembly approved the 16th day of
February 1833, I have hereunto set my hand and caused
the Seal of said Department to be affixed at Harrisburg,
this fourth day of June 1907

Alexander Howell
Secretary of Internal Affairs.